

We thank you for your price request and are pleased to present you the following quotation today

26 april 2016

Administratieve gegevens

Your references

| | | | |
|-----------|---------------|--------------------|---|
| Offer nr. | B0672495 | Aankoop-referentie | - |
| Service | STANDARD pool | Project-referentie | - |
| Printnaam | 14-020-2 | Artikelnummer | - |

Details voor factuur & levering

Rekening voor:

TU Delft DEMO-CEO-TNW
 SSC-F C Crediteuren (200)
 Postbus 5024
 2600GA Delft
 Netherlands
 0031 15 2788305
 invoice-finance@tudelft.nl

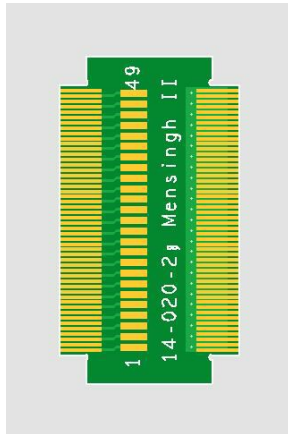
Geleverd op:

TU Delft
 DEMO-CEO
 Van der Waalsweg 8
 2628CH Delft
 Netherlands
 +31 (15) 2788305
 r.vanooijik@tudelft.nl

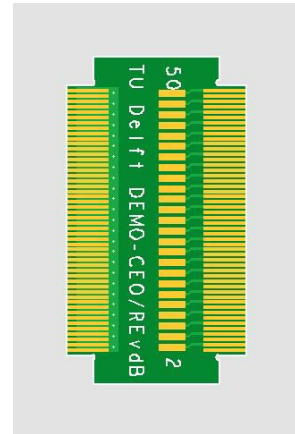
PCB Visualizer

PCB images

Totaalbeeld
 Top :



Totaalbeeld
 Bottom:



Buildup & Mechanisch plan

Opbouw :



Technologie opties

Kenmerken

| | | | |
|-------------------------------|---------|-----------------------------|---------|
| Lagen | 2 | Delivery format | No |
| Printafmeting horizontaal (X) | 17.0 mm | Printafmeting verticaal (y) | 31.0 mm |
| Met eC-registratietooling | No | | |

Kenmerken

| | | | |
|-------------------|------------------------------|----------------------|-------|
| Soldeermasker Top | Groen | Soldeermasker Bottom | Groen |
| Tekstopdruk Top | Wit | Tekstopdruk Bottom | Wit |
| Metaalfinish | Selectief goud (ENIG) | | |
| Elektrisch testen | Yes | | |

Technologie

| | | | |
|--|----------|-------------------------------------|--------------|
| Patroonklasse | 4 | Boorklasse | Boorklasse C |
| Spoorbreedte op buitenlagen (OL-TW) | 0.250 mm | Boordensiteit | <1000/dm2 |
| Kruipruimte op buitenlagen (OL-TT-TP-PP) | 0.200 mm | Gaten <=deze diameter mogen kleiner | 0.45 mm |
| Restring op buitenlagen(OAR) | 0,200 | | |

Materiaalkeuze en opbouw

| | | | |
|---|-------------------------|---|------------------|
| Materiaaldikte | 0,2 mm mm | Opbouw | standaard opbouw |
| Basismateriaal | FR4IMP | Materiaal Tg | 145-150°C |
| Koperfolie buitenlagen | 18µm(End-Cu +/-35µm) | Koperfolie binnenlagen | geen koper |
| Extra metallisatie-doorgangen | 0 | Extra persdoorgangen | 0 |
| Reversed buildup | No | Kerndikte binnenlagen | Standaard |
| Minder voorkomende opties | | | |
| Koper tot de rand van de print | No | Gedeeltelijk gefreesde gemetalliseerde gaten aan de rand | No |
| Afwijkende toleranties van de Eurocircuits standaard | No | Eigen markeringen | No |
| Press-fit connector | No | Dieptefrezen | No |
| Gemetalliseerde zijkant | No | Conische boringen | No |

Prijzen**Printplaten**

| Basket nr. | Leveringstermijn | Aantal | Prijs per eenheid | Transportkosten | Transportwijze | Total price | BTW | Bruto |
|------------|------------------|--------|-------------------|-----------------|----------------|-------------|-------|------------|
| B0672495 | 7 werkdagen | 10 | 53.11 EUR | 0.00 EUR | Express | 531.10 EUR | 0.0 % | 531.10 EUR |

Betalingscondities

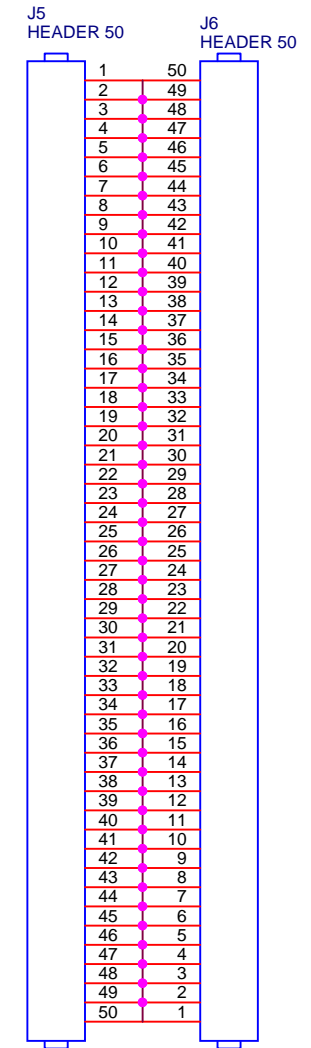
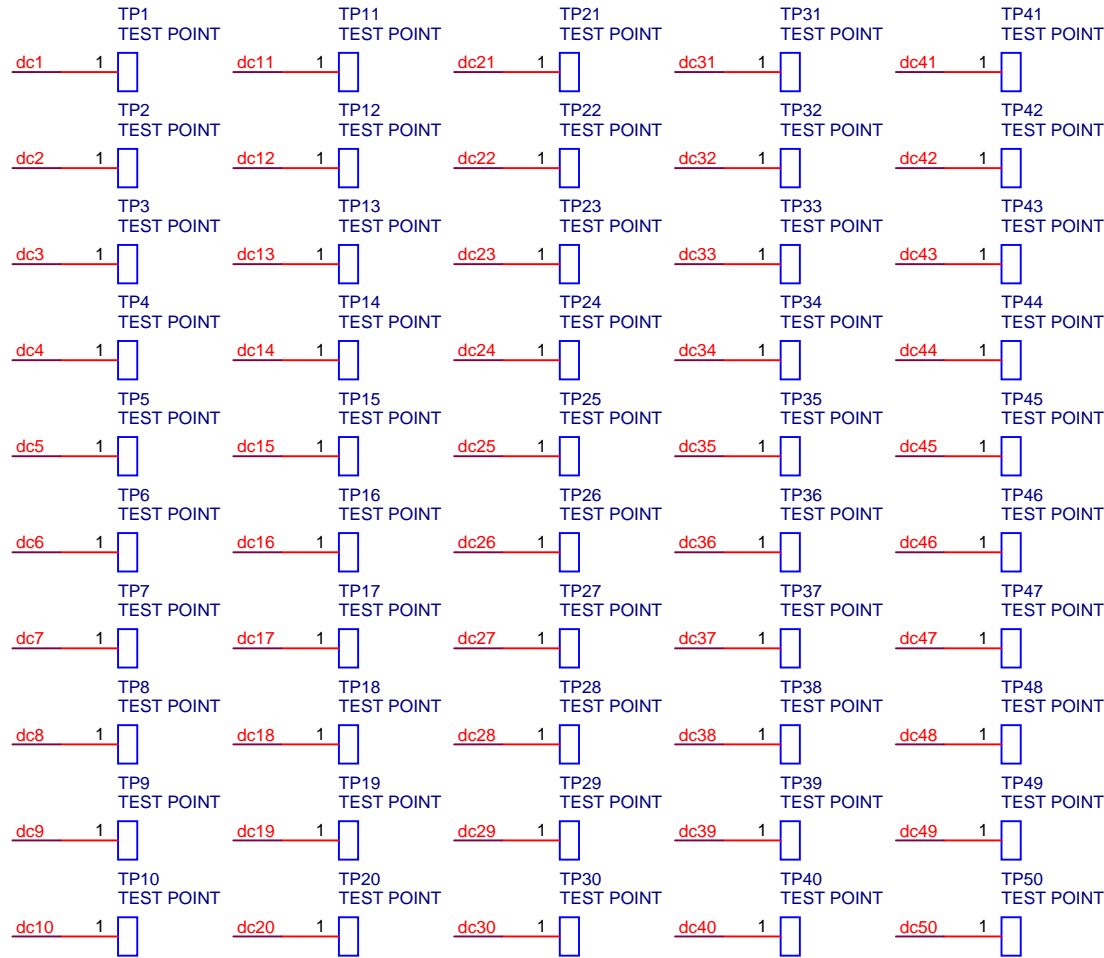
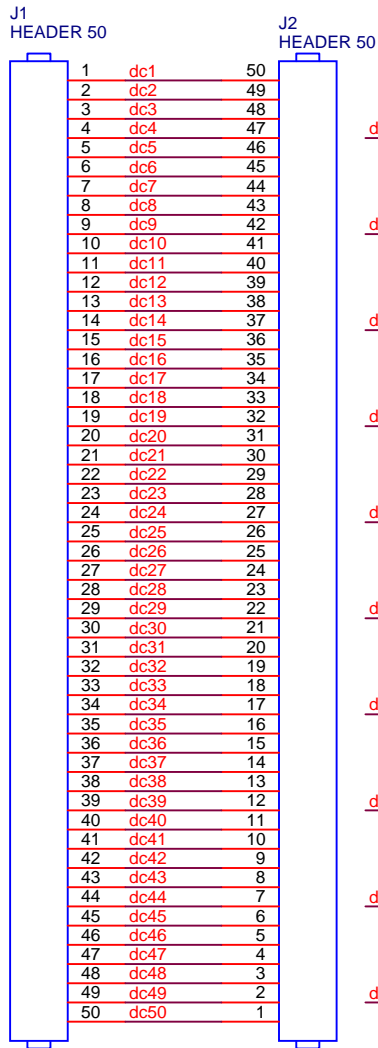
The payment term is 30 days from invoice date.

This quotation is valid for 30 days. All our deliveries are according to our general terms and conditions of delivery. These are available on the website , and agreed upon between us during the registration procedure. All above mentioned prices are an indication on the basis of the information at our disposal on the moment of quotation. These prices may be reviewed at the moment of order on the basis of the final documentation and conditions. The final quantity to be delivered can vary up to 5% of the ordered quantity. Delivery terms start counting upon receipt of the complete documentation and firm order.

EUROCIRCUITS N.V.
Antwerpsesteenweg 66
2800 MECHELEN
Belgium

www.eurocircuits.com

Phone: +3215281630
 Fax: +32 15 28 16 31
 E-mail: euro@eurocircuits.com



PCB1
pcb 14-020-2



| | | |
|---|-----------------------------|-----------------|
| DEMO-CEO Van der Waalsweg 8 2628 CH Delft | | |
| Title Mensingh II | | |
| Size A4 | Document Number 14-020-2 | Rev 1 |
| Date: Tuesday, December 16, 2014 | | Sheet 1 of 2 |

| Bill of Materials | | | | | | | | | | | | | | |
|----------------------|----------|--|--------------|--------------|-----------------|--------------|--------------|-------|---------------------------|-----|-----------|----|----|----------|
| 14-020-2 Revision: 1 | | | | | | | | | | | | | | |
| TU Delft DEMO-CEO | | | | | | | | | Aantal te bestucken pcb's | | | | | |
| Van der Waalsweg 8 | | | | | | | | | 1 | | | | | |
| 2628 CH Delft | | | | | | | | | Prijs totaal € 531,10 | | | | | |
| Item | Quantity | Reference | Part | Fabrikant | Fabrikantnummer | Leverancier | Bestelnummer | Prijs | Min | Inc | Prijs per | | | |
| 1 | 4 | J1,J2,J5,J6 | HEADER 50 | - | - | - | - | 0 | 1 | 1 | 1 | 4 | 4 | € 0,00 |
| 2 | 1 | PCB1 | pcb 14-020-2 | Eurocircuits | E679595 | Eurocircuits | 14-020-2 | 53,11 | 10 | 1 | 1 | 1 | 10 | € 531,10 |
| | | TP1,TP2,TP3,TP4,TP5,TP6,TP7, TP8,TP9,TP10,TP11,TP12,TP13, TP14,TP15,TP16,TP17,TP18, TP19,TP20,TP21,TP22,TP23, TP24,TP25,TP26,TP27,TP28, TP29,TP30,TP31,TP32,TP33, TP34,TP35,TP36,TP37,TP38, TP39,TP40,TP41,TP42,TP43, TP44,TP45,TP46,TP47,TP48, TP49,TP50 | | | | | | | | | | | | |
| 3 | 50 | TEST POINT | | - | - | - | - | 0 | 1 | 1 | 1 | 50 | 50 | € 0,00 |